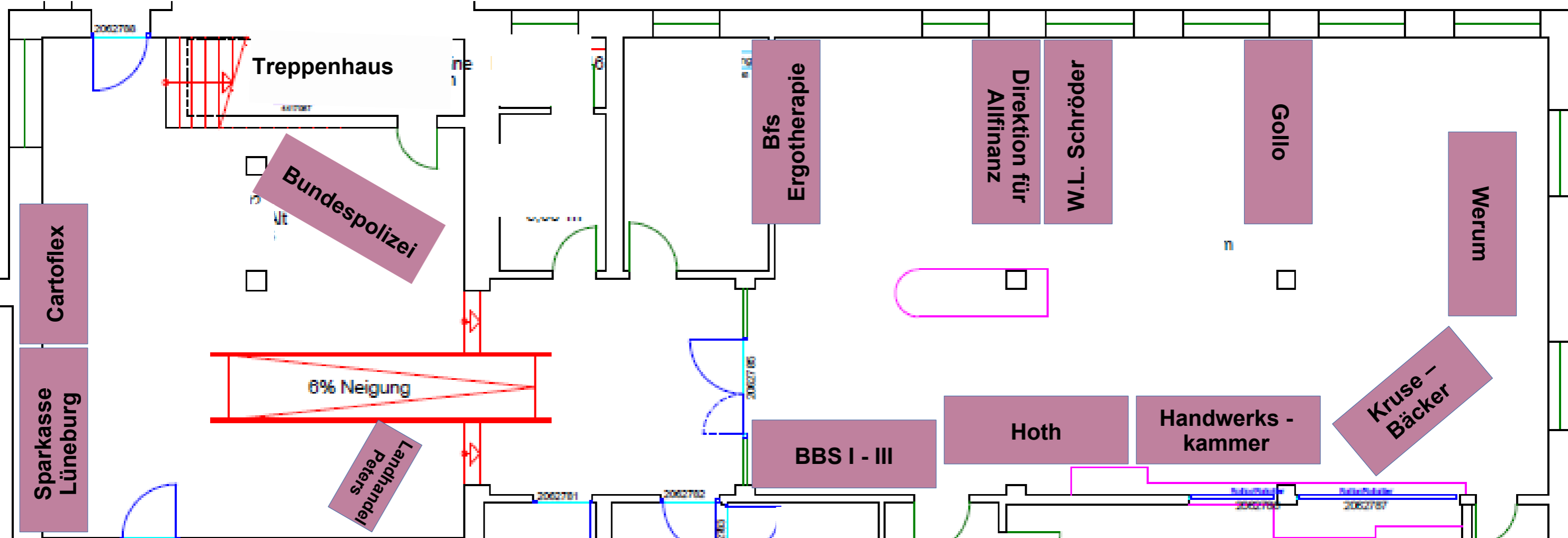
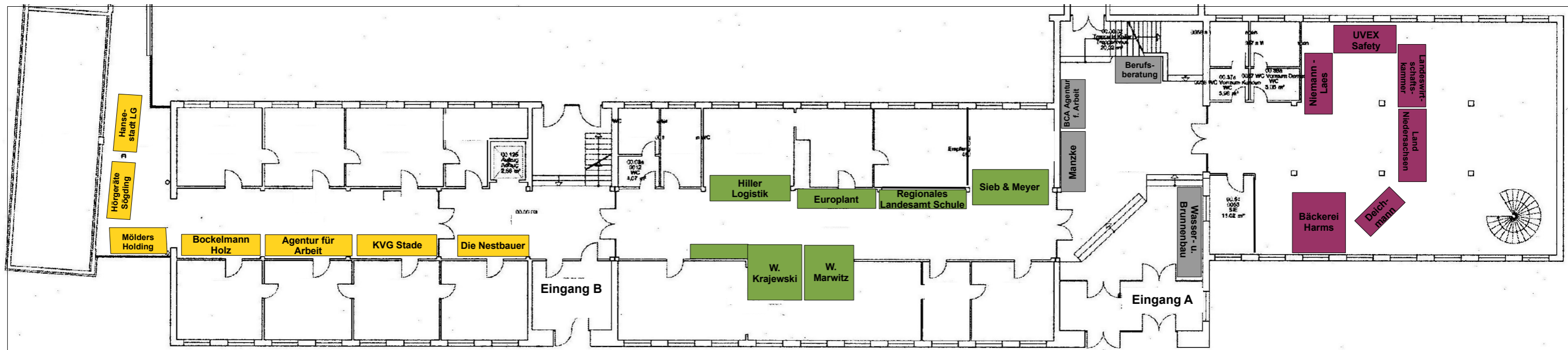


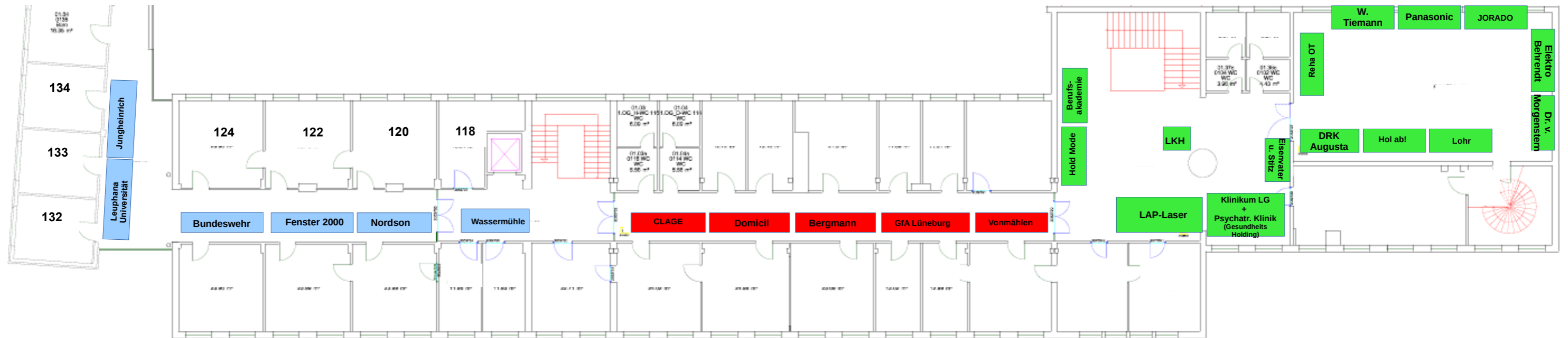
# Untergeschoss



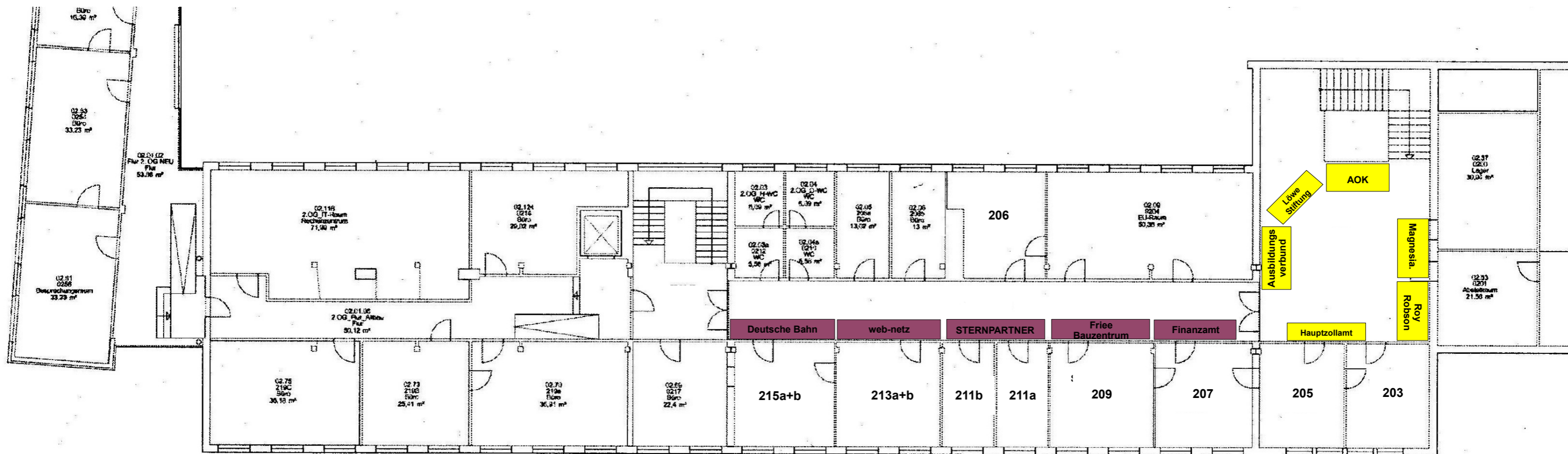
# Erdgeschoss

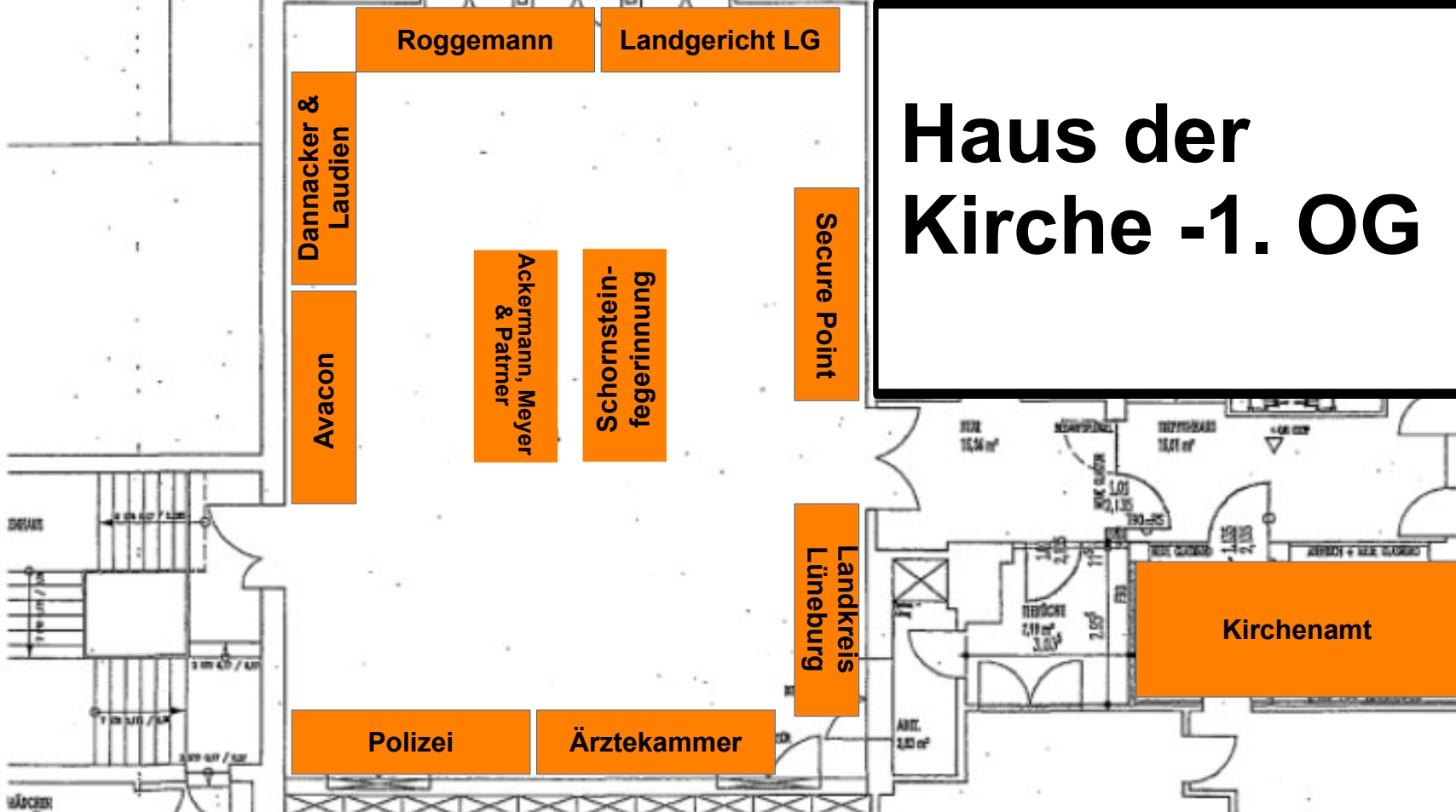


# 1. OG



# 2. OG





Roggemann

Landgericht LG

Dannacker & Laudien

Avacon

Ackermann, Meyer & Patrner

Schornsteinfegerinnung

Secure Point

Landkreis Lüneburg

Polizei

Ärztchammer

# Haus der Kirche -1. OG

Kirchenamt

ANT.  
2,83 m<sup>2</sup>

KIRCHE  
2,19 m<sup>2</sup>  
3,03 m<sup>2</sup>

TRITTSCHALL  
15,41 m<sup>2</sup>

TRITTSCHALL  
15,41 m<sup>2</sup>

ARMY + BEE FLOOR

1.150 x 2.100

1.150 x 2.100

1.150 x 2.100

1.150 x 2.100

1.150 x 2.100

1.150 x 2.100

1.150 x 2.100

1.150 x 2.100

1.150 x 2.100

1.150 x 2.100

1.150 x 2.100

1.150 x 2.100

1.150 x 2.100

1.150 x 2.100

1.150 x 2.100

1.150 x 2.100

1.150 x 2.100

1.150 x 2.100

DEKOR

HÄCKER